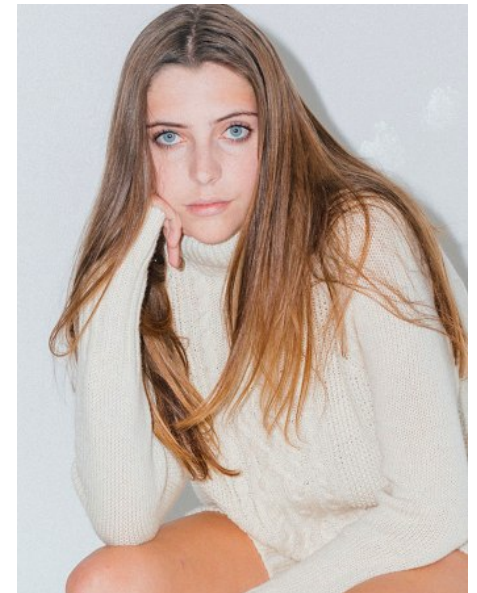
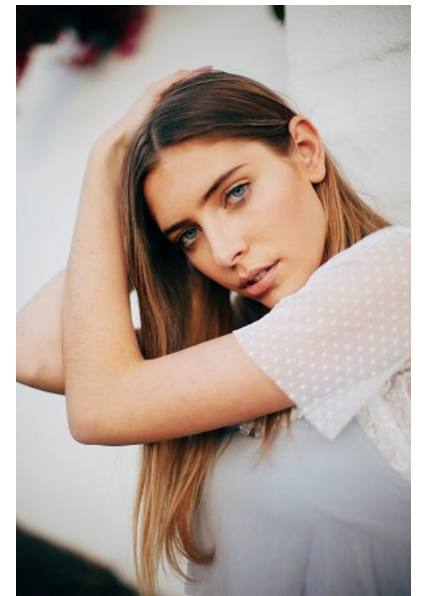




AMY BOWMAN

Height 5'10.5"/179cm Bust 32.5"/82cm Waist 26"/66cm Hips 36"/91cm Dress 6
US/36 EU/10 AUS Shoe 10.5 US/41.5 EU/7.5 UK Hair Brunette Eyes Blue



PRISCILLAS

1/25 Challis Ave | Potts Point | Sydney NSW | 2011 Australia | Tel: 61 2 9332 2422 |

Email: women@priscillas.com.au